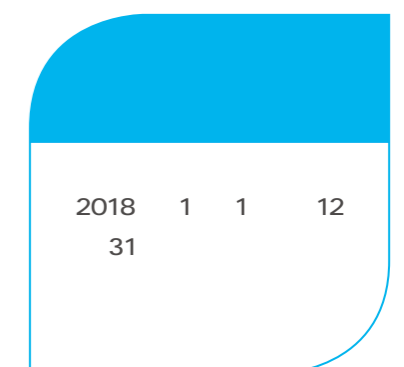
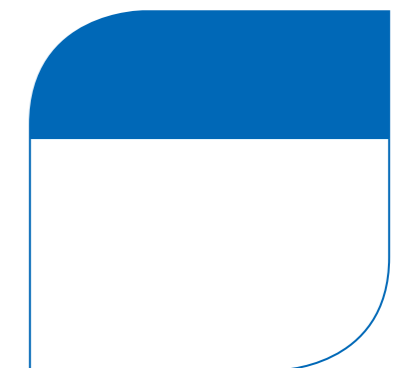
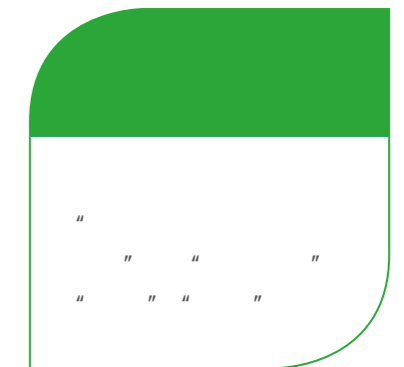




# NOTE ON THE REPORT



GRI  
G 4 ISO  
ISO 26000  
CASS-CSR 4.0



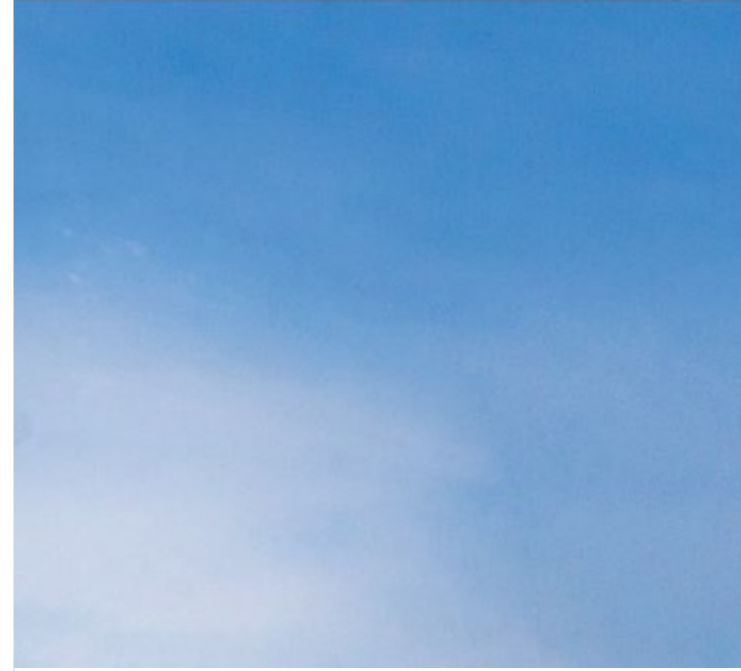
+86- 10- 63887732  
+86- 10- 63887730  
E - mail 12006129@chnenergy.com.cn



# Contents



01
02
04
06
08
14
20
32
50
58
59
60
61





2018

" 1169"

6

500

2018

2019



贾彦兵

Jia Yan Bing President

# MESSAGE FROM THE PRESIDENT

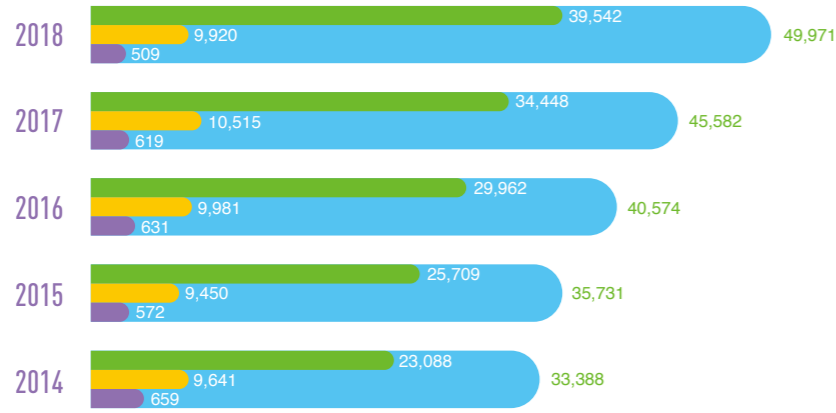


## CORPORATE PROFILE

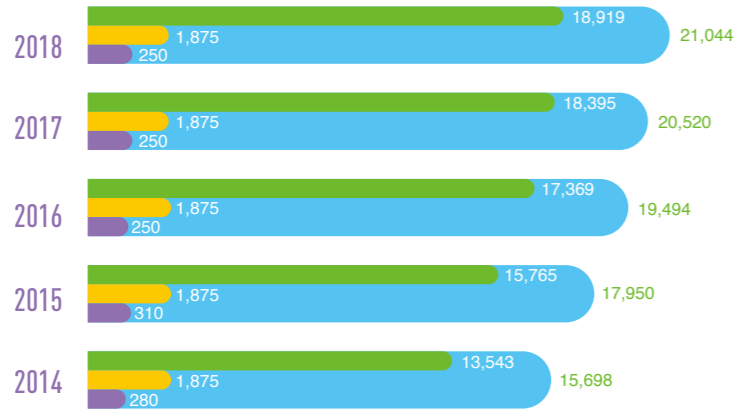
1993					
2009	"	"			300
32					
2018					21,044
18,919	"	"	"	"	"
"	"	"	"	"	"
"	"	"	6	"	500

# KEY PERFORMANCE

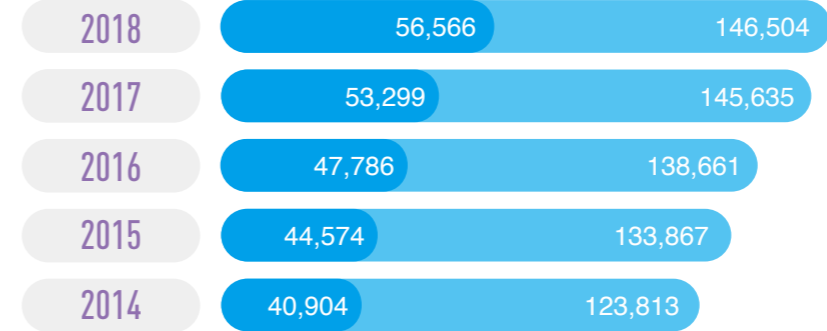
5



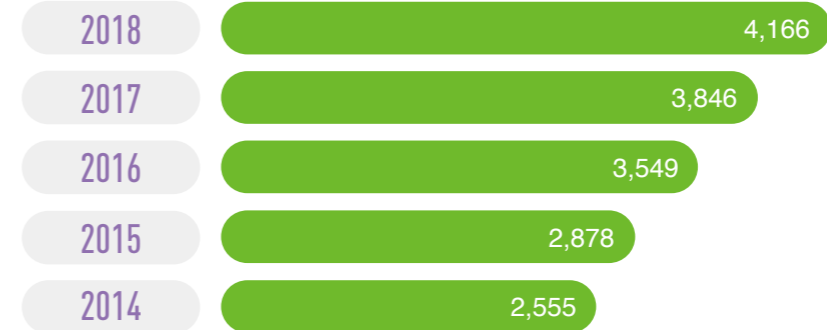
5



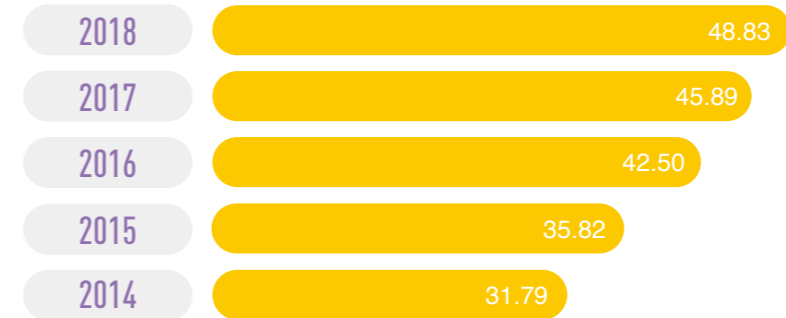
5



5



5

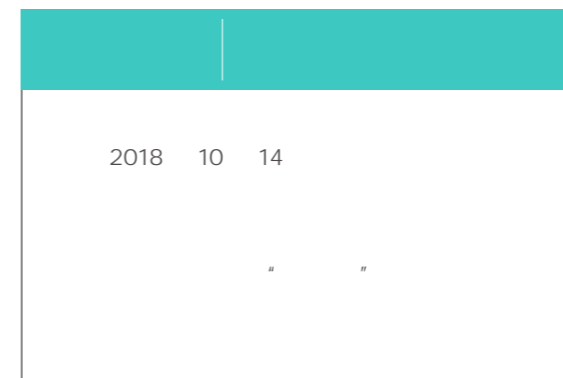
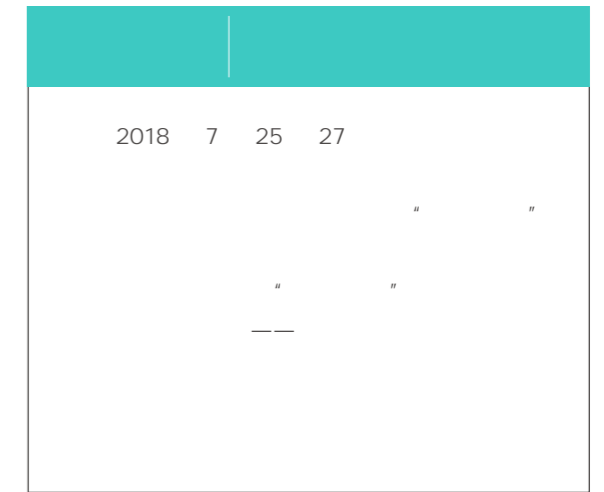


# RESPONSIBILITY FEATURE



01/

2018





2018 11 30

426

500

2018



02/

2018

2018 12 31

2018

12,000

5

272

1,492

2018 7 17



16%

7,999

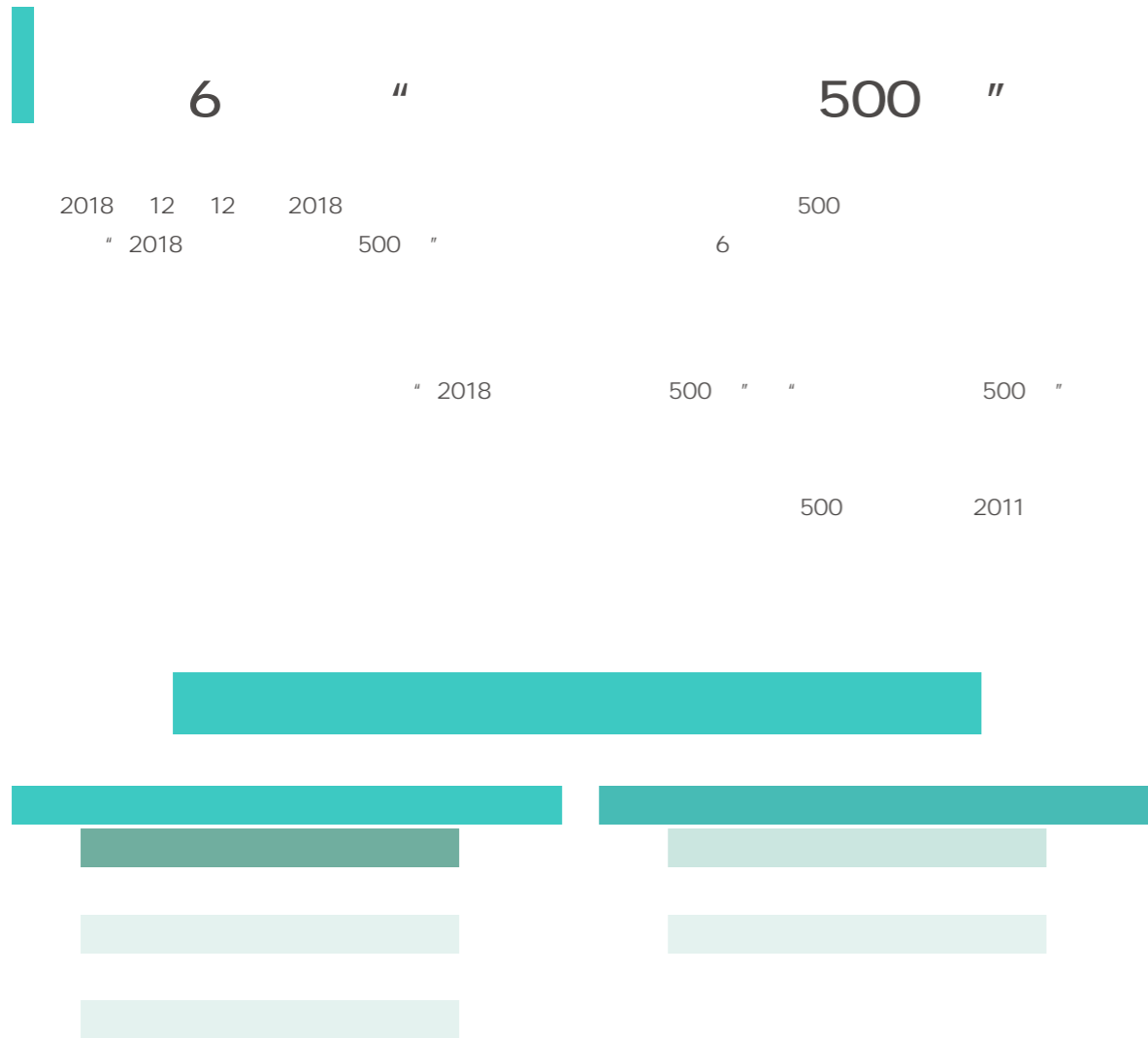
3,120

7.63



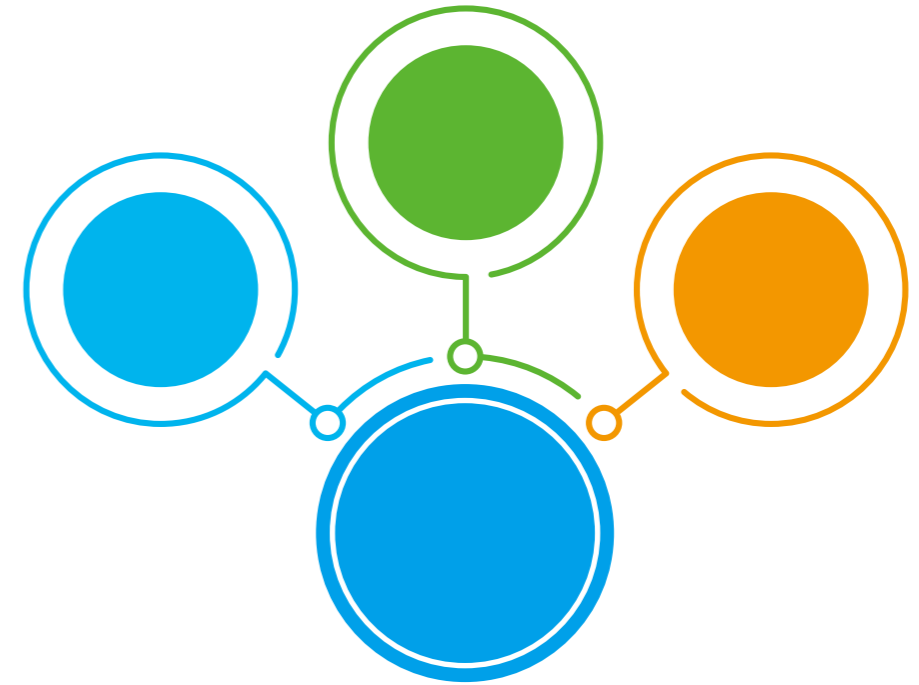
100 700







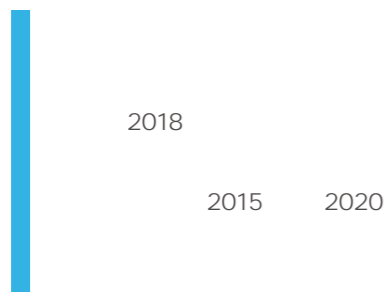
# RESPONSIBILITY MANAGEMENT



01/

02/





2018	2018

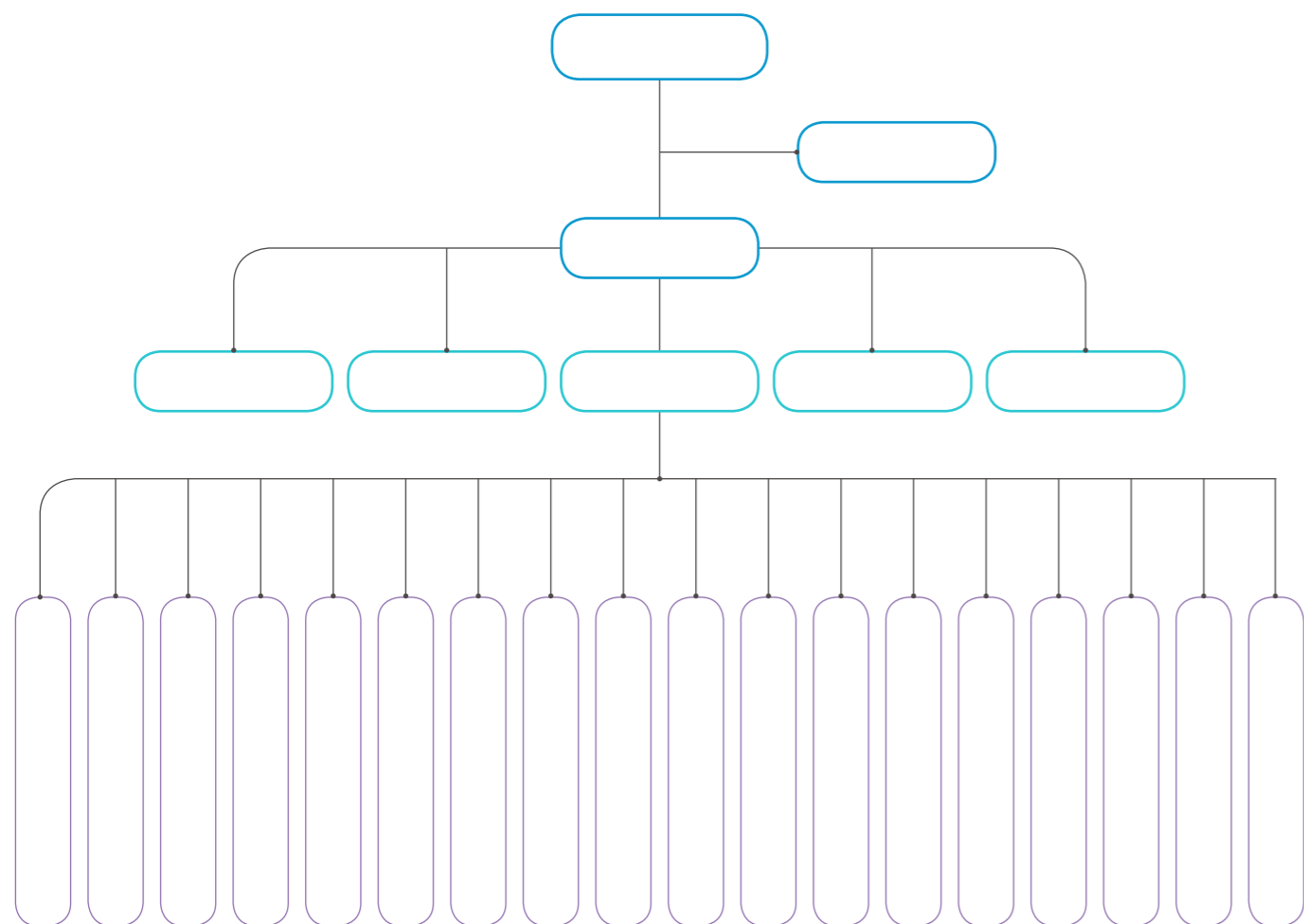


# FULFILL ECONOMIC RESPONSIBILITY



01/

		58.97	7.9%	
41.66		8.3%		5
18				3
4		2		
	61.4%	2.0		



## 02 /

H

57.27% 1.17% H  
41.56%

## 03 /

" "

" "

## 04 /

" "

" " "

"



	10	ABN
	608	

05 /

2018 H



01 /

31  
171



工程名称: 龙源青海省海西州  
德令哈50MW风电项目  
110KV送出线路工程

110KV 50MW

2018  
100 H7  
100



H 4#300MW

/CLASSIC CASE

2018 12 29  
H 4#300MW  
H 6#300MW  
H 2- 1#100MW  
2018 1 17  
H 2#300MW 2018  
100



" "

	7.2	
7.8		10
		4
2018		

02/

/CLASSIC CASE

2018 9 8 H7  
86 5.5 677.92 "  
" "

	135		
		18	
89			
		6	523.5
"		"	



/CLASSIC CASE



2018 11 8  
4  
A72



2018 7 5

---

## 03/

---

	8,012		120
		499.71	
	395.42		14.78%
	2018		2,209
2017	174		114

" "



02/

03/



2018 10



2018 11 12

/CLASSIC CASE

2018 11 19

“ ”

01/



# FULFILL SOCIAL RESPONSIBILITY



" i 8 " + +  
L±

/ CLASSIC CASE

“ ”  
“ ”  
2018 3 2  
“ ”



02/

2018  
100%  
26 1,482



/ CLASSIC CASE

“ ”  
“ ”  
2018  
“ ”  
12  
“ ”



03/

2018  
6,415 1,195 2018 7,610

01 /

02 /

" " " "

2018	
	100%
	100%
	8



		2019	
5,990	1,707	40	8
	25,777	12	
4,390	14,338		
3			
	39	89	5 389
		2	225
40	20		
			525

/ CLASSIC CASE

2018 3 15



# 03/

"

"

2018	129
29	
2018	23
	298
	12
37	
"	"
"	"

# 04/

70

84



2018 3 22

2018

# 05/

"

"

2018	
	330
	62
	40
	90
	40



06/

" 40 " " " "

" " 2018 10 18 "

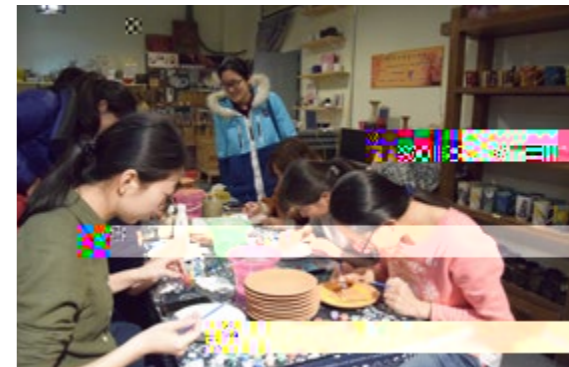


/ CLASSIC CASE



2018 25 " VIS " " " "

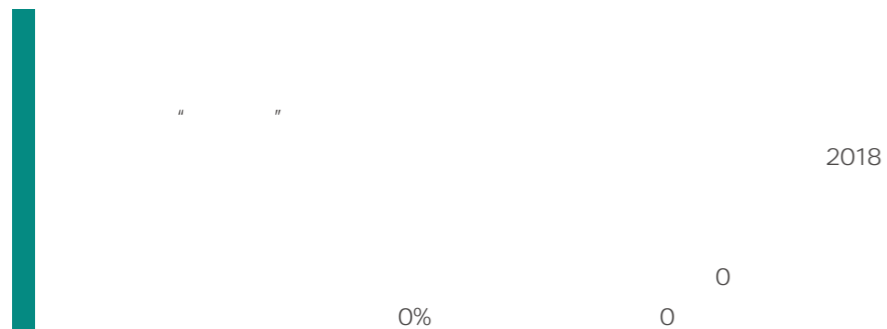
" " 2018 3 8 "



2018 9 33 315

2018 9 250





2018 7 12

### 01 /

" "

2018 10 29



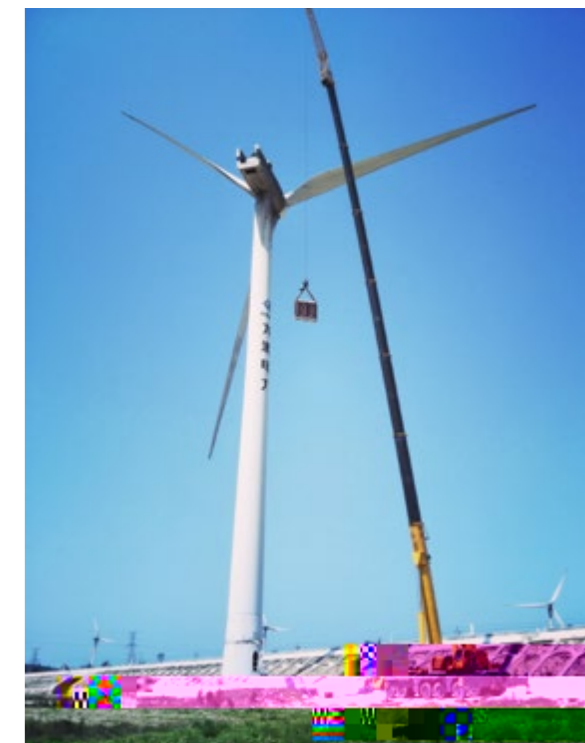
### 02 /

60  
49



2018 3 22

### 03 /



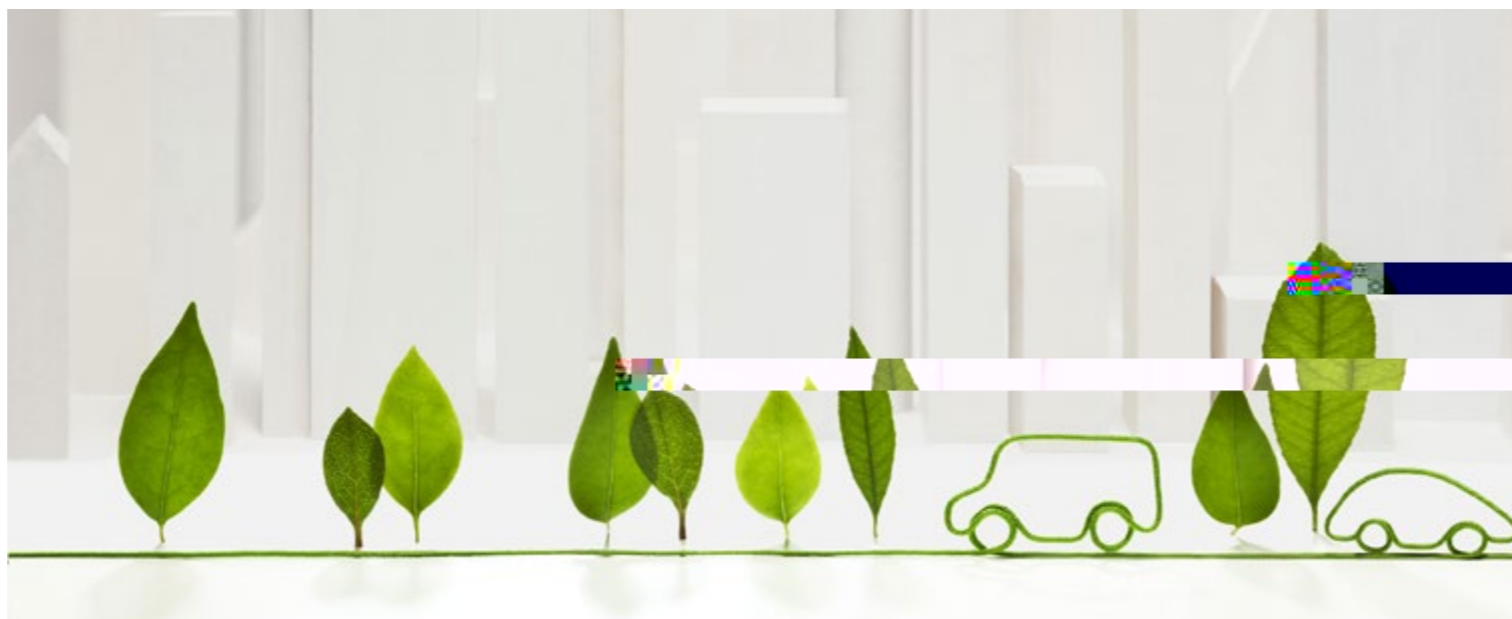
2018 7 18

2018 10 24

04 /

13

G 58



/CLASSIC CASE

	"	"	
2018	"	"	"
	36	3,004	406,125

01 /



1.4MWp  
1110kW

	"	"	
2018	"	"	"
	1,000	1.49	
	20	400	
	3,000		
	8 9		



# 02 /

“ ”

“ ”

2018 6 22

“ ” “ ”

174



## /CLASSIC CASE

2018 4 2

2018 10 16  
69

“ ”



2018 12 28



# 03/

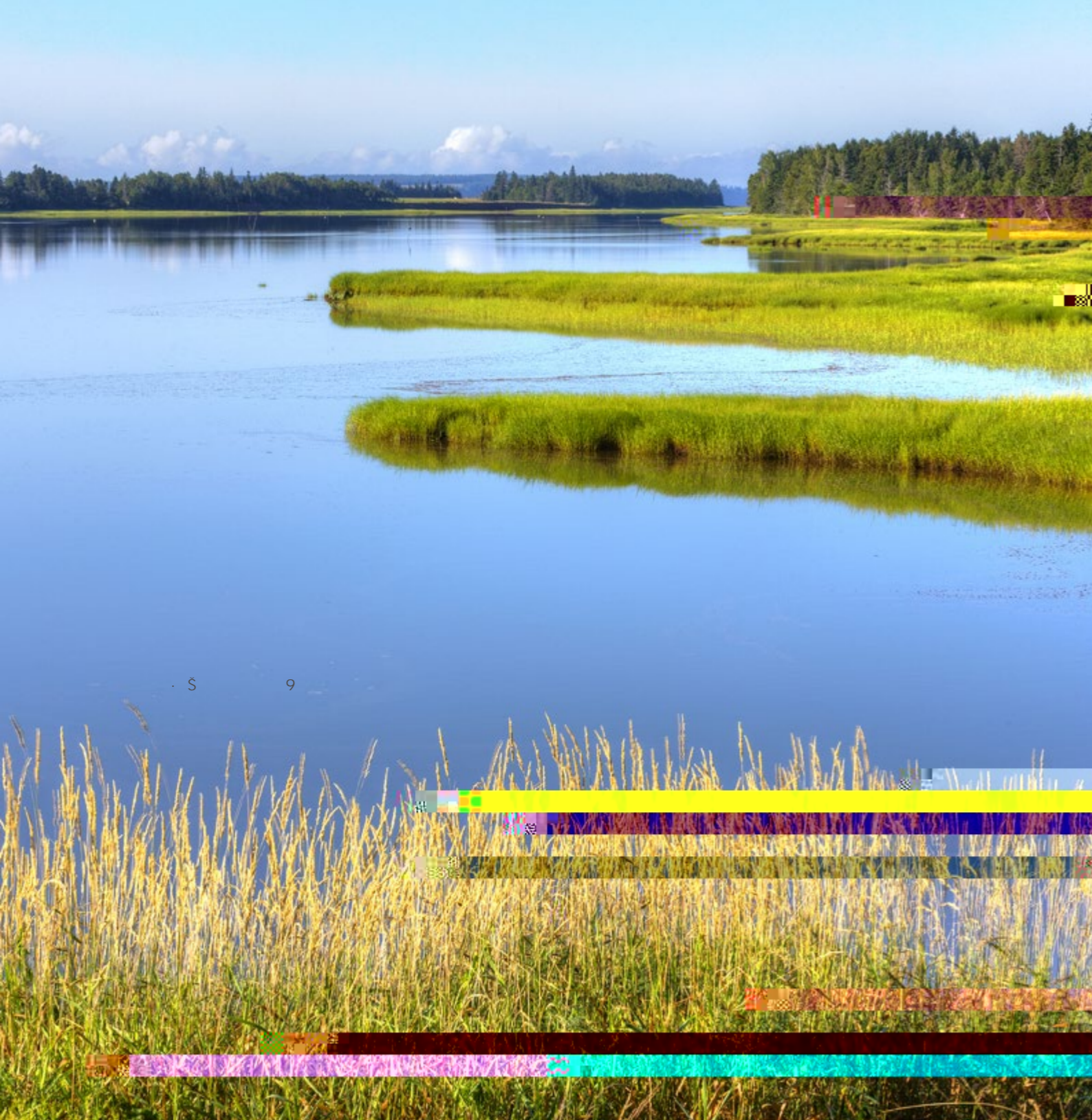
2018

37

191

2018 3 30





2018		3.93%	2017
0.16			
2018			146
200	š	r	
2 20 77		0	

2018 12





01 /

GB 3096- 2008

/CLASSIC CASE

2018 6

02 /

/CLASSIC CASE

“		”	
2018	5	5	7.82
”		”	150





2018

02 /

01 /

2018 5

2018 5 6

210.085

100

" "

/ CLASSIC CASE

2018 6 7



2018 5 26



2018 11

2018



2018 4

30



# Prospects

2015 2020

- 1.
- 2.
- 3.
- 4.
- 5.

# THIRD-PARTY COMMENTS



2018

ESG 2018  
SDGs

2018

ISO 26000

2018

# FEEDBACK



2018



- 1.
- 2.
- 3.
- 4.
- 5.
- 6.
- 7.
- 8.



- 9.



E - mail

